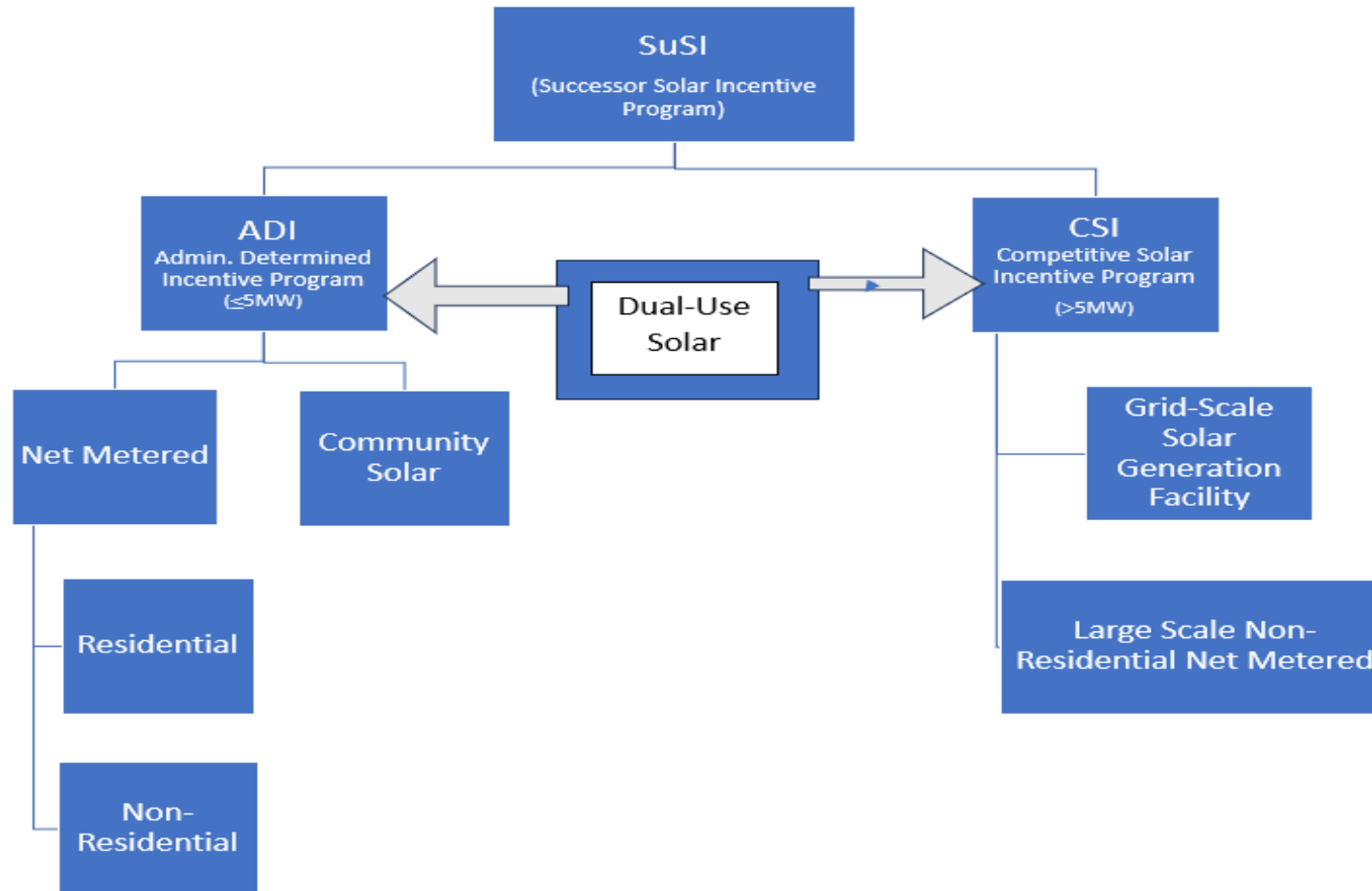




NJ BOARD OF PUBLIC UTILITIES DUAL-USE SOLAR PILOT PROGRAM

Pinelands Commission Meeting
January 12, 2024

SUCCESSOR SOLAR INCENTIVE PROGRAM



DUAL-USE SOLAR PILOT PROGRAM

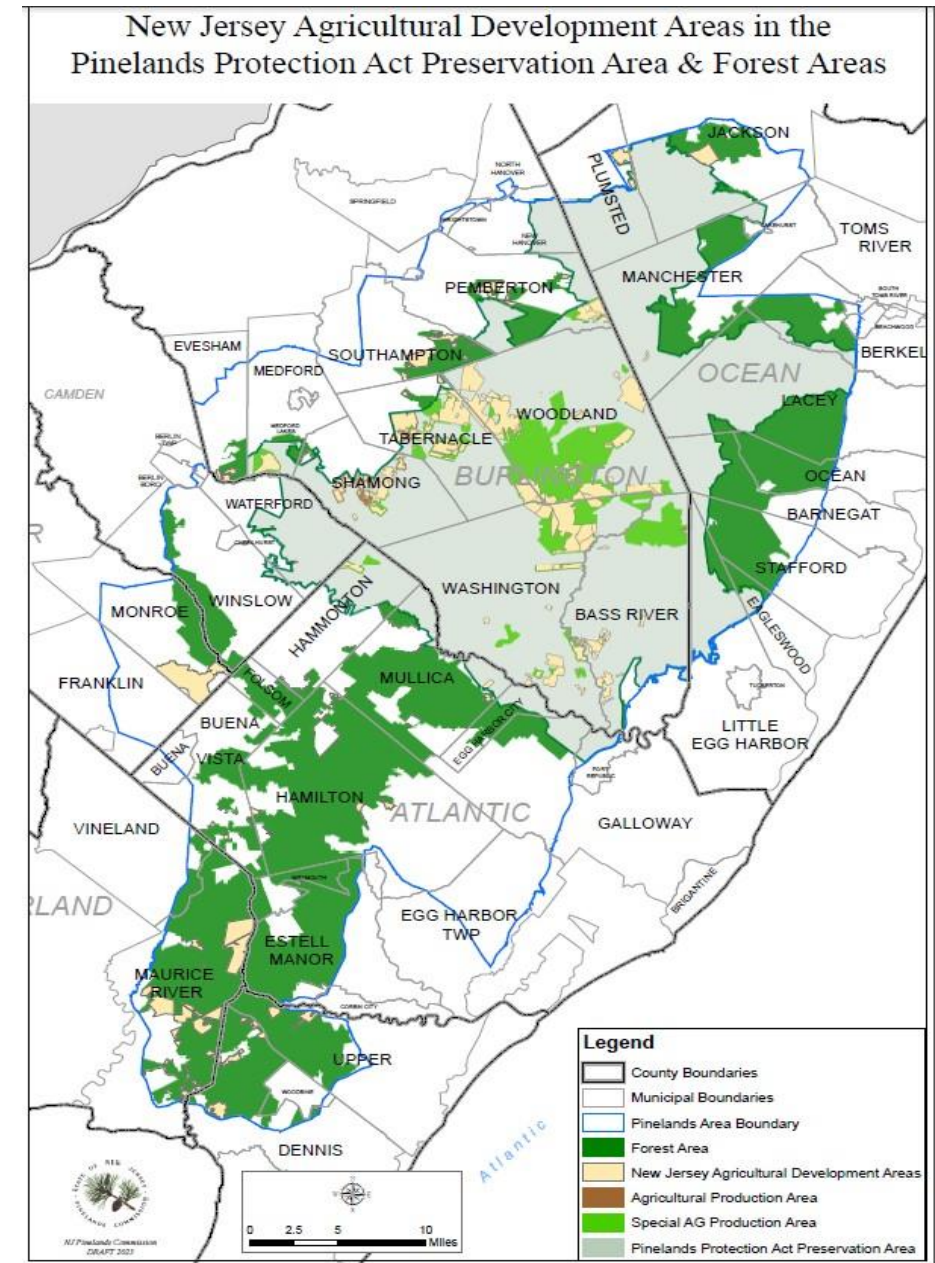
- Solar energy projects connected to NJ's Transmission and Distribution system
- On Unpreserved Farmlands
- Lands Used for Solar Project (i.e. lands below and adjacent to solar array) must be maintained in agricultural/horticultural use
- Goals:
 - Additional revenue stream to farmers
 - Aid in financial stability of the farm
 - Continued use of land for active agricultural/horticultural production
 - Increased production of clean energy.
- Intended to stop conversion of farmland from farming to solar.

PILOT PROGRAM

- Pilot Program size – 200MW over 3 years, can be extended for 2 add'l years
- Capacity Targets – Year 1 = 30 MW, Year 2 = 70 MW, Year 3 = 100 MW (+ 50 MW per year extension)
- Project capacity – 10MW, measured in direct current, for each dual-use solar project

PILOT PROGRAM

- Siting prohibitions
 - Pinelands Preservation Area (Not PAD)
 - Forest Areas
 - Wetlands
 - Prime Agricultural Soils and soils of statewide importance (i.e. Agricultural Development Areas)



PINELANDS ISSUES

- Siting of Dual-Use Solar consistent with CMP
- Use of Preservation Area instead of PAD
- Waiver Process
- Providing Farms within Pinelands opportunity to participate
- Agreement/Process to make participation possible in light of Dual-Use Act prohibitions

SCHEDULE

- Straw Proposal and Stakeholder virtual meeting occurred in November 2023
- Stakeholder comments were due December 15, 2023
- Draft Pilot Program rules to Board early Winter
- Pilot Program opened by Board Order
- Expected opening early 2024 – funding/pre-qualification criteria
- First solicitation round/application window start on date of pilot program rule adoption (mid-2024)
- Project sections for round one Fall 2024
- Pilot Program will run for 36 months after rule adoption